



london land
management

PHONE: +44 20 7591 0288
FAX: +44 20 7591 0988
1 Montpelier Street | Knightsbridge | London | SW7 1EX
Reg in Eng & Wales No: 2981213 | VAT No: 650 1785 44

LOWNDES SQUARE, KNIGHTSBRIDGE, SW1X

£1,925 P/W

Close to the amenities of Sloane Square and Knightsbridge lies this spacious 2 bedroom third & fourth floor flat, measuring over 1,600 sq/ft.



DETAILS

Lowndes Square, Knightsbridge, SW1X

Close to the amenities of Sloane Square and Knightsbridge lies this spacious third & fourth floor flat, measuring over 1,600 sq/ft. There are two good sized double bedrooms [both En-suite], an open plan dining / reception room, and a large private roof terrace.

Reception Room / Living Room / Kitchen / 2 Bedrooms both (En-suite) / Roof Terrace

Furnished

£1,925 Per Week

Available now



2 BEDROOMS



1,600 SQ/FT.



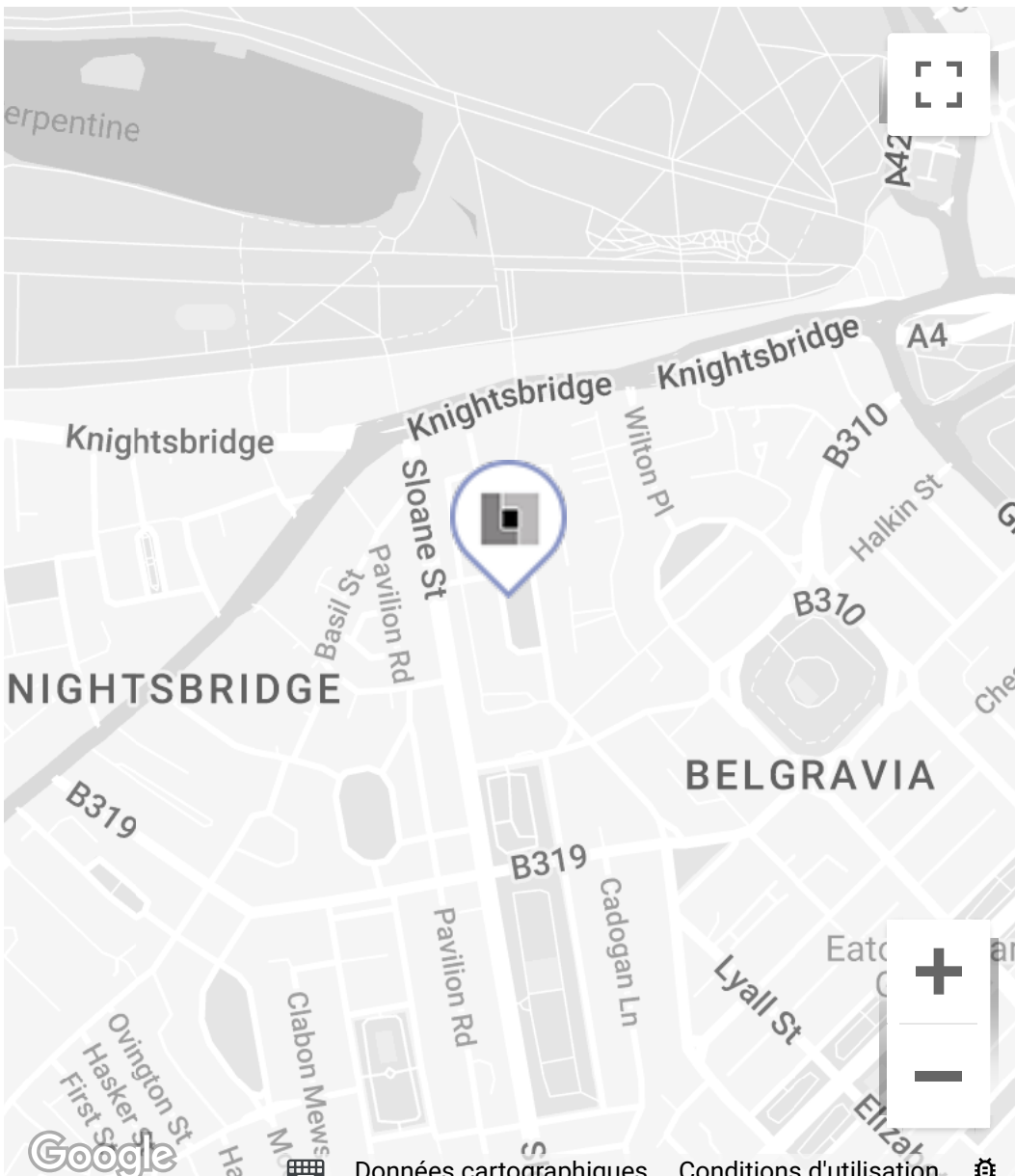
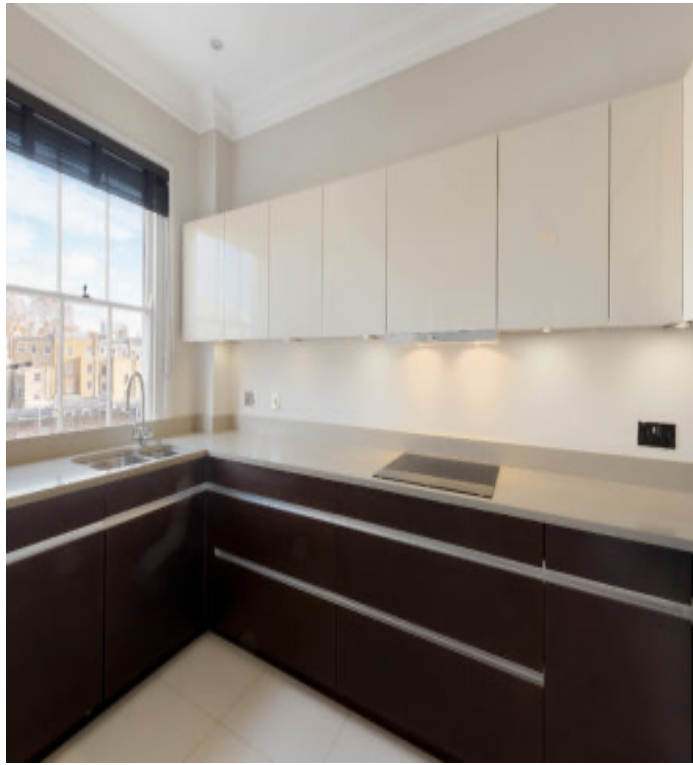
FURNISHED



3 BATHROOMS



ROOF TERRACE



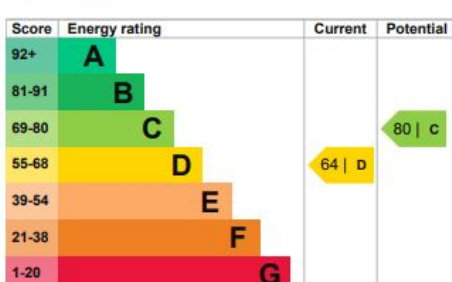
LOWNDES SQUARE, KNIGHTSBRIDGE, SW1X

EPC RATING

Energy efficiency rating for this property

This property's current energy rating is D. It has the potential to be C.

[See how to improve this property's energy performance.](#)



The graph shows this property's current and potential energy efficiency.

Properties are given a rating from A (most efficient) to G (least efficient).

Properties are also given a score. The higher the number the lower your fuel bills are likely to be.

For properties in England and Wales:

the average energy rating is D
the average energy score is 60

Floorplans

