

HANS CRESCENT, KNIGHTSBRIDGE, SW1X

£995 P/W
2 BEDROOM FLAT

Contemporary and light third floor flat [with lift] in this sought after building, with porter, in the heart of Knightsbridge



DETAILS

Contemporary and light third floor flat [with lift] in this sought after building, with porter, in the heart of Knightsbridge. The flat has great entertaining space, and benefits from the local amenities that Knightsbridge and Sloane Street have to offer.

2 Bedrooms / 2 Bathrooms (1 En-suite) / Reception room / Kitchen / Air Conditioning / Wooden Floors / Lift / Porter

£995 P/W

Unfurnished



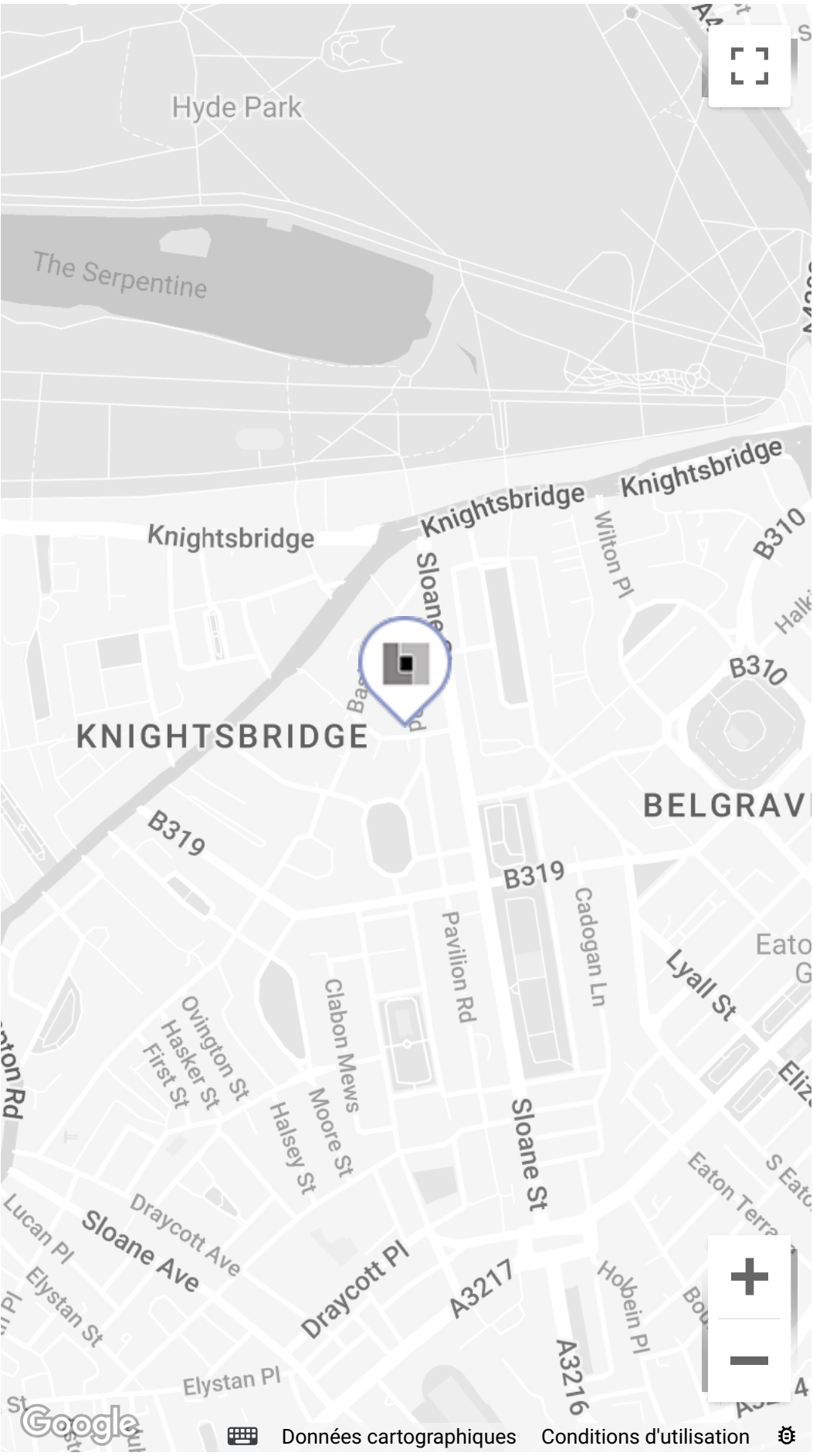
2 BEDROOMS



FURNISHED / UNFURNISHED

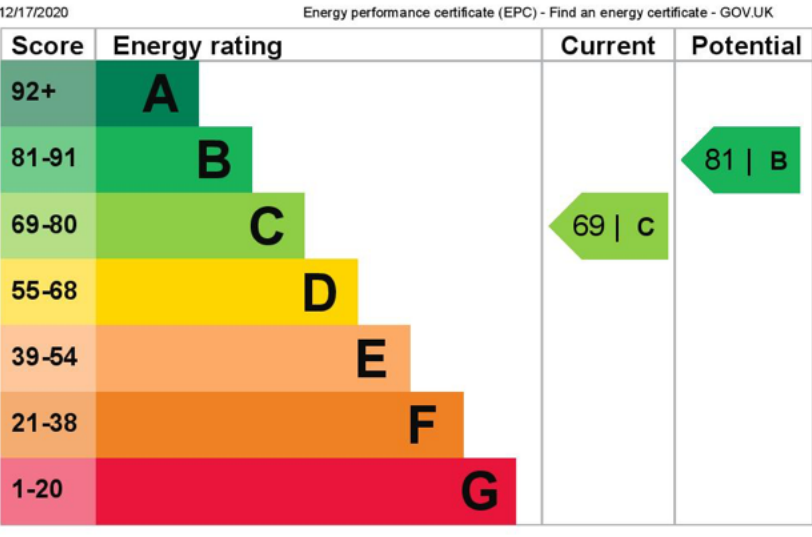


2 BATHROOMS (1 EN-SUITE)



HANS CRESCENT,
KNIGHTSBRIDGE, SW1X

EPC RATING



The graph shows this property's current and potential energy efficiency. Properties are given a rating from A (most efficient) to G (least efficient). Properties are also given a score. The higher the rating the lower your fuel bills are likely to be. The average energy rating and score for a property in England and Wales are D (65).

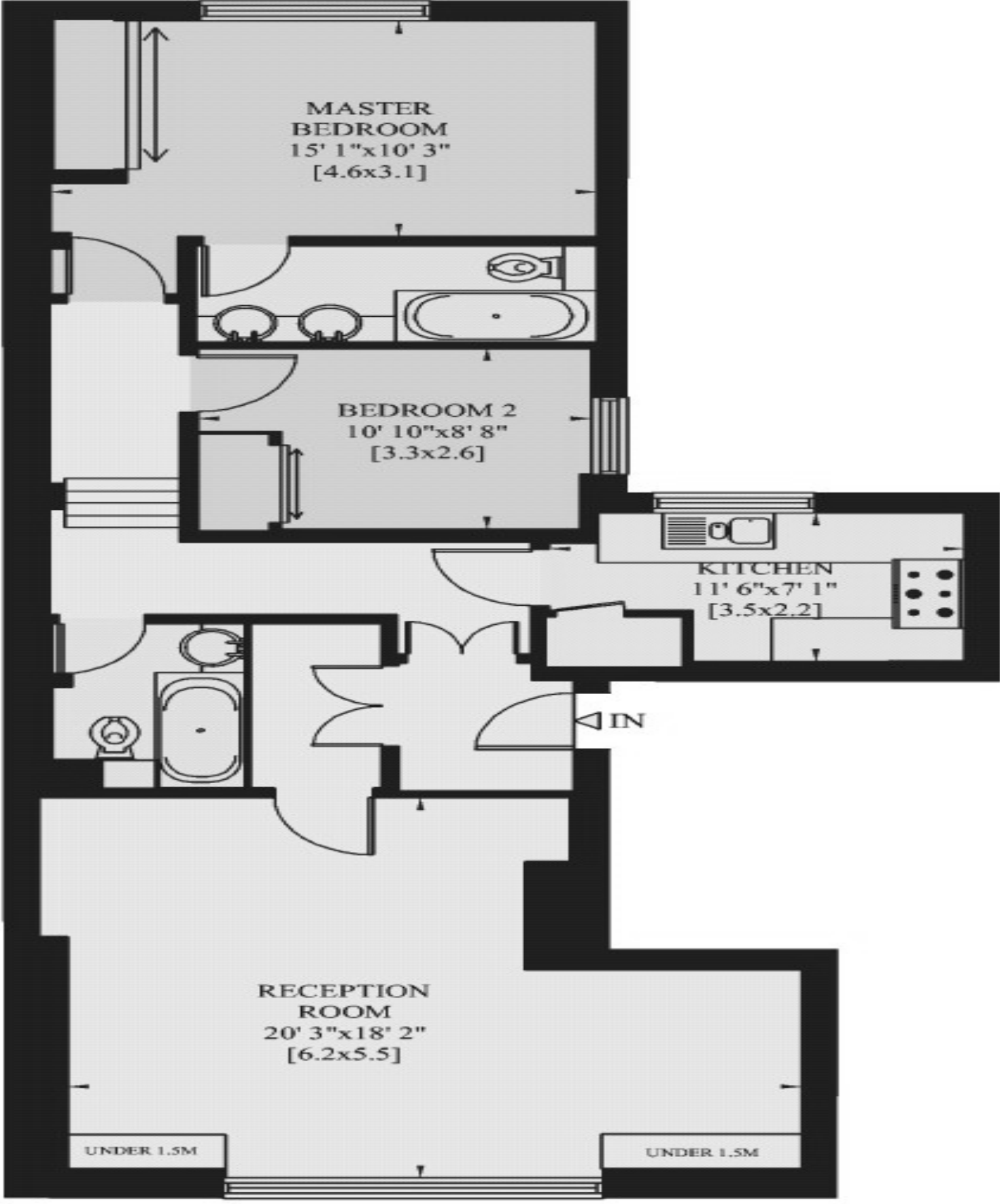
Breakdown of property's energy performance
This section shows the energy performance for features of this property. The assessment does not consider the condition of a feature and how well it is working.
Each feature is assessed as one of the following:
• very good (most efficient)
• good
• average
• poor
• very poor (least efficient)
When the description says 'assumed', it means that the feature could not be inspected and an assumption has been made based on the property's age and type.

Feature	Description	Rating
Wall	Solid brick, as built, no insulation (assumed)	Poor
Window	Fully double glazed	Average
Main heating	Ground source heat pump, warm air, electric	Good
Main heating control	Programmer and room thermostat	Average
Hot water	Electric immersion, off-peak	Poor

https://www.energy-certificates.digital.com/mortgage.gov.uk/energy-certificates/150-0761-0123-2295-0203 2/7

Floorplans

Gross Internal Area: 88 Sq. metres
944 Sq. feet



THIRD FLOOR