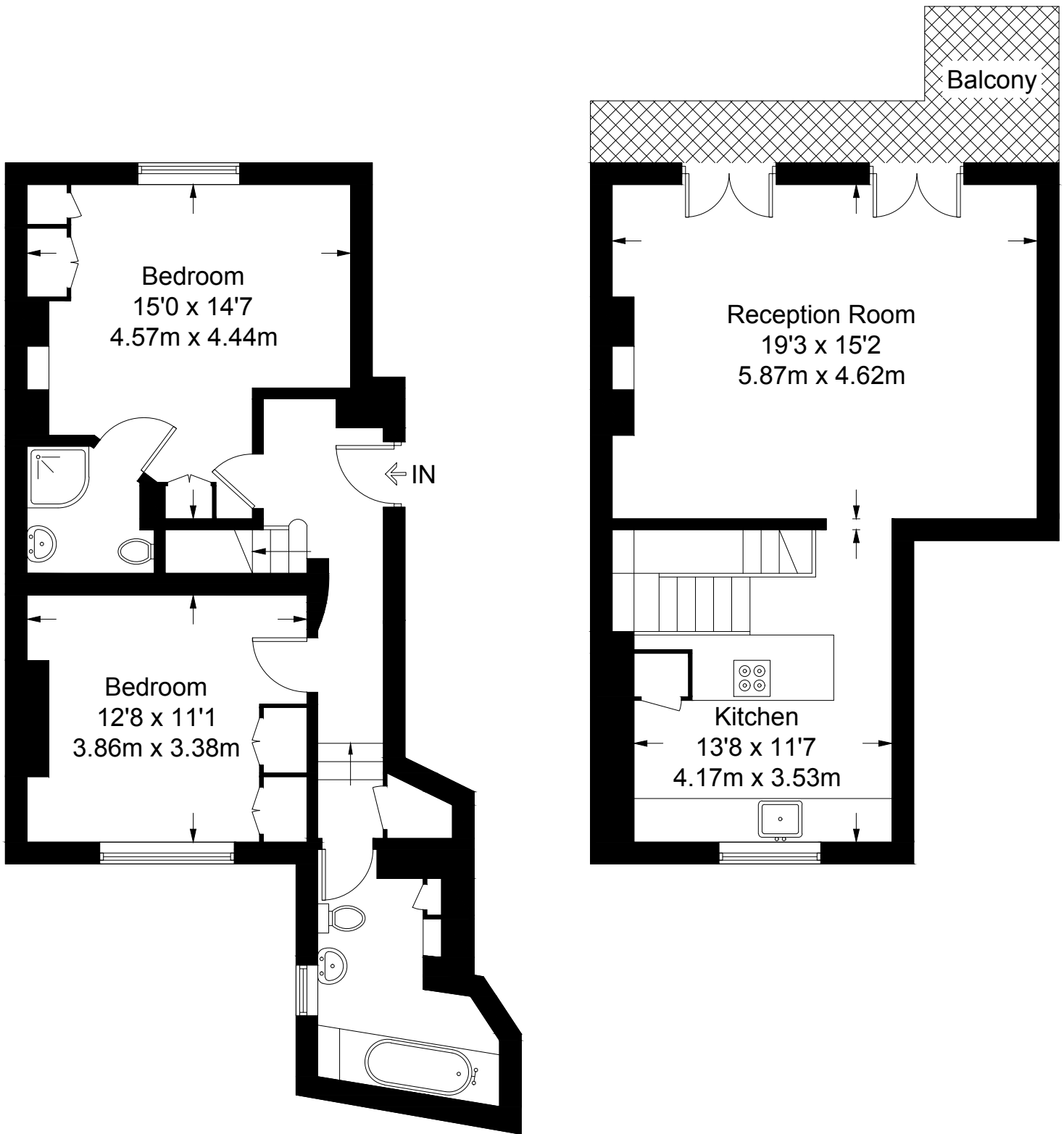


# Thurloe Square

Approximate Gross Internal Area = 1026 sq ft / 95.3 sq m



**Ground Floor = 548 sq ft / 50.9 sq m**

**First Floor = 478 sq ft / 44.4 sq m**

Not to scale, for guidance only and must not be relied upon as a statement of fact.  
All measurements and areas are approximate only and have been prepared in accordance with the current edition of the RICS Code of Measuring Practice.